

## Tenor Index

### Introduction

The government securities market is considered as the backbone of fixed income securities market and is the prime funding avenue for the government. It serves as a benchmark for portfolio management, an indicator of market performance and development, and also forms the basis for derivative products like options and futures. The price to yield sensitivity is different for each bond. In order to capture such non-uniform yield impact on various maturity buckets all outstanding securities are divided into 5 buckets based on their residual maturities.

### BOND INCLUSION RULES

**Data:** All outstanding dated government securities classified based on their residual maturity

**Issuer:** Central Government

**Price:** Volume weighted average price (VWAP) or model price when there are no trades

**Tenor:** Minimum tenor is 1.5 years (Residual maturity on the index resetting date is considered)

**Base Date:** December 31, 2003

**Base Value:** 1000

**Weighting:** Market

Tenor Index Constituents Jun-25						
Tenor 1	8.24% GS 2027	6.79% GS 2027	7.02% GS 2027	7.38% GS 2027	8.26% GS 2027	8.28% GS 2027
	6.64% GS 2027	7.17% GS 2028	7.10% GS SGrB 2028	6.01% GS 2028	7.06% GS 2028	8.60% GS 2028
	6.13% GS 2028	7.37% GS 2028	7.26% GS 2029	7.59% GS 2029	7.10% GS 2029	7.04% GS 2029
	6.45% GS 2029	6.75% GS 2029	6.79% GS 2029	7.88% GS 2030	7.17% GS 2030	7.61% GS 2030
	5.79% GS 2030					
Tenor 2	5.77% GS 2030	9.20% GS 2030	7.32% GS 2030	5.85% GS 2030	8.97% GS 2030	7.02% GS 2031
	6.10% GS 2031	6.68% GS 2031	6.79% GS 2031	6.54% GS 2032	8.28% GS 2032	8.32% GS 2032
	7.26% GS 2032	7.95% GS 2032	8.33% GS 2032	7.29% GS SGrB 2033	7.26% GS 2033	7.57% GS 2033
	7.18% GS 2033	8.24% GS 2033	6.57% GS 2033	7.10% GS 2034	7.50% GS 2034	6.19% GS 2034
	6.79% GS 2034	7.73% GS 2034	6.22% GS 2035	6.33% GS 2035	6.64% GS 2035	
Tenor 3	7.40% GS 2035	6.67% GS 2035	7.54% GS 2036	8.33% GS 2036	7.41% GS 2036	7.18% GS 2037
	6.83% GS 2039	7.23% GS 2039	7.62% GS 2039	6.92% GS 2039		
Tenor 4	8.30% GS 2040	8.83% GS 2041	8.30% GS 2042	7.69% GS 2043	9.23% GS 2043	8.17% GS 2044
	8.13% GS 2045					
Tenor 5	8.13% GS 2045	7.06% GS 2046	7.72% GS 2049	7.16% GS 2050	6.67% GS 2050	6.62% GS 2051
	6.99% GS 2051	7.36% GS 2052	7.30% GS 2053	7.09% GS 2054	7.72% GS 2055	7.63% GS 2059
	7.19% GS 2060	6.80% GS 2060	6.76% GS 2061	6.95% GS 2061	7.40% GS 2062	7.25% GS 2063
	7.34% GS 2064	6.90% GS 2065	7.46% GS 2073	7.09% GS 2074		

## INDEX LEVELS

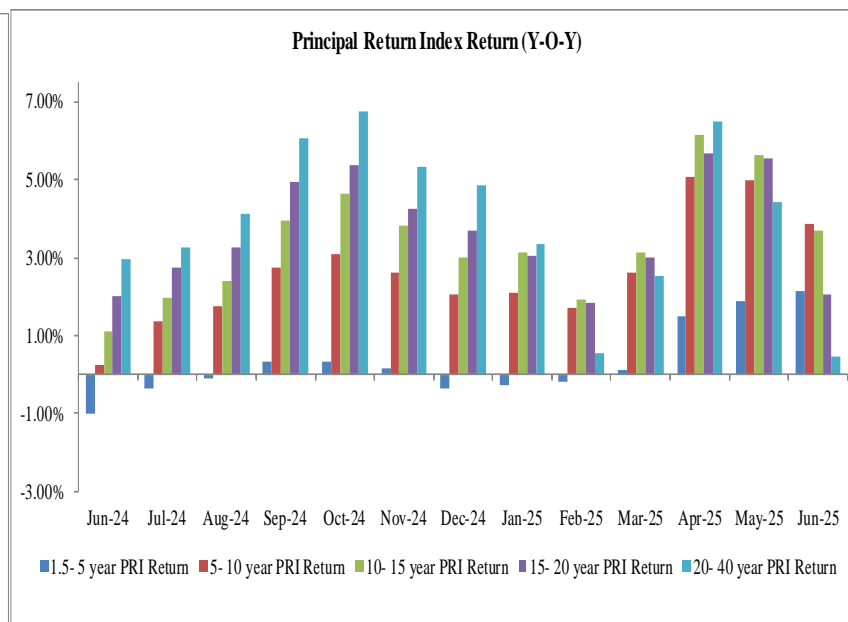
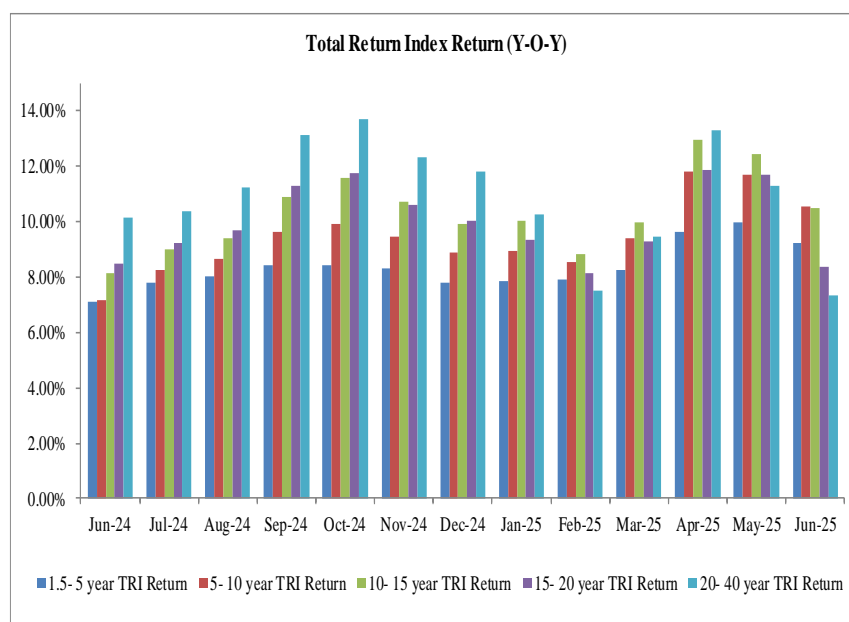
Tenor	1-5 year		6-10 year		11-15 year		16-20 year		20+ year	
Date	TRI	PRI	TRI	PRI	TRI	PRI	TRI	PRI	TRI	PRI
30-Jun-24	3971.6821	792.1840	4027.6597	838.6439	4060.8035	887.5986	4067.7481	889.1135	4114.5238	883.2778
31-May-25	4354.2032	813.7305	4501.8798	881.6590	4560.2836	936.9813	4550.8229	932.1322	4540.6734	915.5864
30-Jun-25	4355.6576	809.2238	4476.7438	871.6593	4508.7667	920.8979	4422.4980	907.5079	4428.8060	887.3204

## INDEX PERFORMANCE

### Month-over-month Return(%)

Period	TENOR1 TRI			TENOR2 TRI			TENOR3 TRI			TENOR4 TRI			TENOR5 TRI		
	2023	2024	2025	2023	2024	2025	2023	2024	2025	2023	2024	2025	2023	2024	2025
Jan	0.55%	0.67%	0.77%	0.48%	0.90%	0.96%	0.43%	1.05%	1.15%	0.25%	1.40%	0.70%	0.58%	2.26%	0.74%
Feb	-0.06%	0.49%	0.55%	-0.02%	0.82%	0.41%	0.37%	1.30%	0.10%	0.48%	1.33%	0.10%	0.78%	2.27%	-0.50%
Mar	1.31%	0.65%	0.97%	1.55%	0.53%	1.41%	1.57%	0.82%	1.99%	1.41%	1.13%	2.28%	1.11%	0.81%	2.78%
Apr	1.05%	0.20%	1.56%	1.40%	-0.18%	2.23%	1.66%	-0.49%	2.47%	1.47%	-0.31%	2.29%	2.04%	-1.46%	2.38%
May	0.77%	0.90%	1.23%	1.12%	1.38%	1.26%	1.54%	1.77%	1.24%	1.96%	1.65%	1.47%	2.00%	2.36%	0.34%
Jun	0.16%	0.75%	0.03%	-0.01%	0.56%	-0.56%	-0.24%	0.81%	-1.14%	-1.42%	0.48%	-2.86%	-1.40%	1.43%	-2.49%
Jul	0.32%	0.99%		0.22%	1.30%		0.16%	1.00%		0.12%	0.85%		0.36%	0.60%	
Aug	0.50%	0.75%		0.60%	0.98%		0.68%	1.09%		0.68%	1.15%		0.61%	1.44%	
Sep	0.44%	0.84%		0.30%	1.29%		0.01%	1.52%		-0.04%	1.60%		-0.03%	1.87%	
Oct	0.33%	0.33%		-0.33%	-0.02%		-0.53%	0.12%		-0.56%	-0.14%		-1.01%	-0.39%	
Nov	0.80%	0.66%		1.15%	0.68%		1.20%	0.34%		1.22%	0.12%		1.37%	-0.03%	
Dec	1.07%	0.55%		1.23%	0.64%		1.37%	0.59%		1.37%	0.80%		1.16%	0.63%	

Period	TENOR1 PRI			TENOR2 PRI			TENOR3 PRI			TENOR4 PRI			TENOR5 PRI		
	2023	2024	2025	2023	2024	2025	2023	2024	2025	2023	2024	2025	2023	2024	2025
Jan	-0.05%	0.08%	0.18%	-0.12%	0.31%	0.39%	-0.18%	0.47%	0.58%	-0.39%	0.77%	0.10%	-0.03%	1.67%	0.16%
Feb	-0.64%	-0.09%	-0.01%	-0.59%	0.26%	-0.13%	-0.20%	0.75%	-0.44%	-0.11%	0.74%	-0.47%	0.22%	1.73%	-1.06%
Mar	0.68%	0.03%	0.34%	1.10%	0.08%	0.95%	0.95%	0.22%	1.40%	0.76%	0.50%	1.67%	0.47%	0.20%	2.21%
Apr	0.47%	-0.41%	0.99%	0.81%	-0.79%	1.69%	1.08%	-1.09%	1.94%	0.87%	-0.95%	1.75%	1.46%	-2.09%	1.85%
May	0.18%	0.30%	0.66%	0.53%	0.80%	0.71%	0.97%	1.21%	0.70%	1.39%	1.07%	0.92%	1.44%	1.81%	-0.23%
Jun	-0.43%	-0.81%	-0.56%	-0.61%	-0.03%	-1.14%	-0.84%	0.24%	-1.73%	-0.92%	0.81%	-2.68%	-2.04%	0.85%	-3.14%
Jul	-0.28%	0.39%		-0.38%	0.72%		-0.44%	0.42%		-0.51%	0.24%		-0.25%	0.01%	
Aug	-0.10%	0.15%		0.01%	0.40%		0.09%	0.52%		0.05%	0.55%		0.01%	0.87%	
Sep	-0.16%	0.25%		-0.30%	0.72%		-0.59%	0.96%		-0.67%	1.01%		-0.64%	1.33%	
Oct	-0.27%	-0.27%		-0.94%	-0.61%		-1.15%	-0.46%		-1.21%	-0.76%		-1.65%	-0.99%	
Nov	0.21%	0.06%		0.56%	0.10%		0.61%	-0.24%		0.62%	-0.49%		0.78%	-0.62%	
Dec	0.48%	-0.06%		0.65%	0.06%		0.80%	0.01%		0.77%	0.21%		0.56%	0.06%	




---

**DISCLAIMER:**

This document contains data/information relating to the construction of CCIL Indices and is for information purpose only. Data/information in this document is subject to change without prior notice. CCIL or its agents makes no representations or warranties, express or implied about the completeness, accuracy, reliability or suitability of this document. CCIL or its agents accepts no liability for direct, indirect, incidental or consequential damages, losses arising out of, or in connection with the use of data/ information provided in this document. All proprietary rights, statutory or otherwise, in this document shall remain exclusive property of CCIL and any reproduction, distribution or transmission or modification is prohibited except with explicit approval of CCIL.

Research Department

The Clearing Corporation of India Limited, CCIL Bhavan, College Lane, off S K Bole Road, Dadar (West), Mumbai - 400 028, Phone: 6154 6661/6582, research@ccilindia.co.in